



AUDIO CONTROLE

DESCRIPTION

- Configuration by modules
- Adjustable parametric filter
- 128 band noise reduction
- 6 band frequency shaping
- 12 level occlusion manager
- Compression range from linear to WDRC
- 4 level noise reduction
- Multi level voice enhancer
- Peak smoothing manager
- Adaptive feedback canceling
- Multi pattern directionality (ITE and ITC only)
- Twin Microphone system (ITE and ITC only)
- Programmable telecoil
- On/Off Swith (with external volume control only)
- Available in 3 styles : ITE, ITC or CIC
- Color choice for shell and faceplate
- External volume control (if specified with new order)

Selecto is the first of a new generation of hearing aids. An open modular platform allows the hearing aid specialist to choose among different configurations to adapt the hearing aid to the patient's needs. This new approach, confirms our expertise in the Canadian hearing aid technology. As the patient's needs change with time, it will be possible to add modules instantly. New modules will be available for the patient as the technology evolves. The noise reduction and the automatic feedback canceller modules are only a few examples of the six module that are presently available. With internet access, you can add any one of the modules instantly. Audio Controle offers a free thirty day trial period for all modules added to an existing hearing aid. If the module is not disactivated before the end of the trial period, the module is charged automatically. Whether it is a ITE, ITC or CIC, it is possible with all Selecto hearing aids to add any one of the modules without having to return the hearing aid to the manufacture.



Selecto ITE



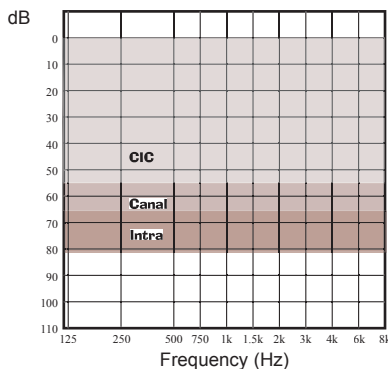
Selecto ITC



Selecto CIC

PERFORMANCE DATA	ANSI S3.22-1996			CEI 118-7 1994		
	ITE - ITE P	ITC - ITC P	CIC - CIC P	ITE - ITE P	ITC - ITC P	CIC - CIC P
Styles						
Saturation OSPL (dB)						
Peak	114 - 117	110 - 113	106 - 109	114 - 117	110 - 113	106 - 109
HF-Average	112 - 115	107 - 110	103 - 106	-	-	-
1600 Hz	-	-	-	112 - 115	107 - 110	103 - 106
Gain SPL (dB)						
Peak	45 - 51	40 - 46	35 - 41	45 - 51	40 - 46	35 - 41
HF-Average	39 - 44	34 - 39	29 - 34	-	-	-
1600Hz	-	-	-	38 - 42	34 - 39	29 - 33
Reference test gain (dB)						
1 000 - 1 600 - 2 500 Hz	35 - 38	30 - 33	26 - 29	-	-	-
1 600 Hz	-	-	-	33 - 36	28 - 31	23 - 26
Frequency response(Hz)	200-6400	200-7000	200-5700	200-6400	200-7000	200-5700
Total harmonic distortion (%)						
Input 70 dB @ 500 Hz	0,9	0,7	1,0	-	-	-
Input 70 dB @ 800 Hz	1,2	0,9	0,7	-	-	-
Input 70 dB @ 1 000 Hz	-	-	-	1,7	1,0	0,8
Input 65 dB @ 1 600 Hz	1,6	1,2	0,8	-	-	-
Battery life (h)						
13 ZA	189 - 170	-	-	189 - 185	-	-
312 ZA	-	102 - 96	-	-	110 - 106	-
10 ZA	-	-	59 - 55	-	-	59 - 55
Battery drain (mA)	1,22-1,36	1,17-1,24	1,01-1,09	1,21-1,24	1,09-1,13	1,00-1,08
Equivalent input noise (dB)	12	13	14	11	14	16
Attack time (ms)	Adjustable			Adjustable		
Release time (ms)	Adjustable			Adjustable		

FITTING RANGE



Added features

- Low battery indicator
- Program chance indicator
- Voice enhancer
- 4 compression mode
- Low frequency equalizer for directionality

Modules

- Compression and expansion channels
- Memories
- Noise reduction
- Adaptive feedback canceling
- Directionality
- Parametric filter

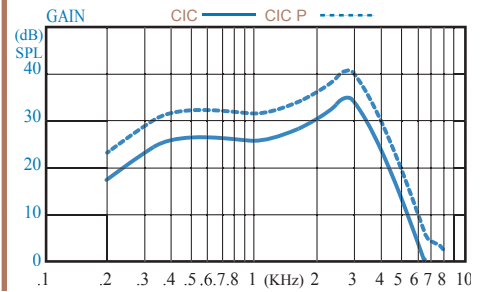
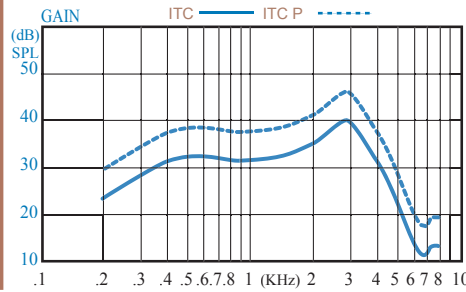
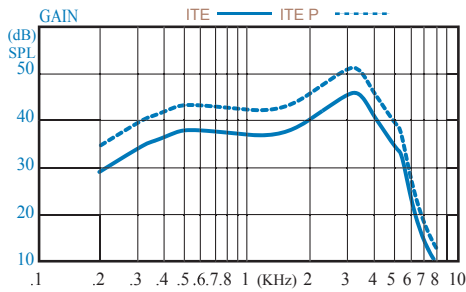
Hear the difference!

60dB input curves

Output: 117dB

Output: 113dB

Output: 109dB

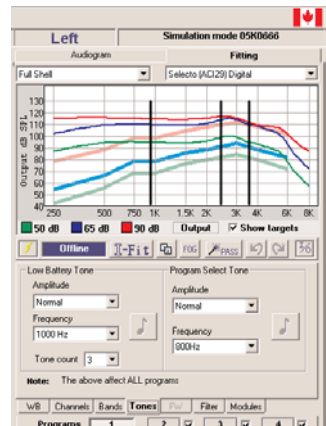
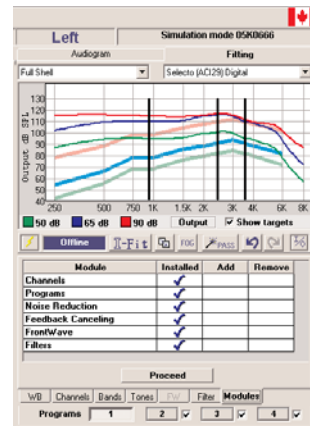
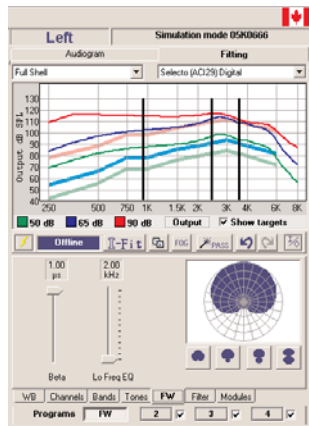
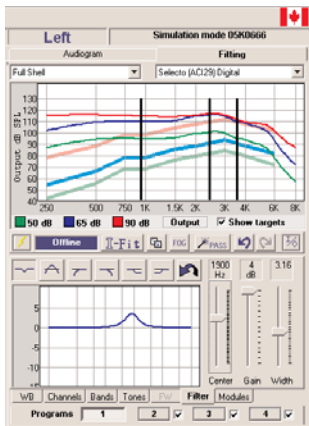
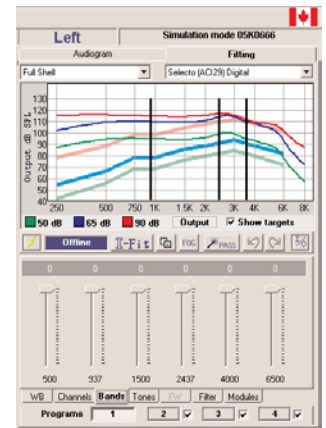
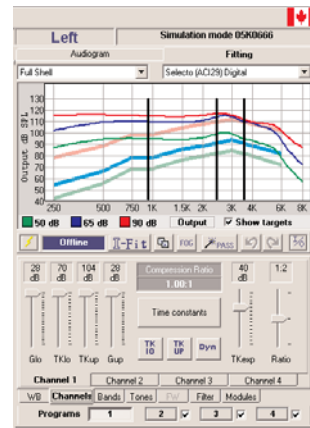
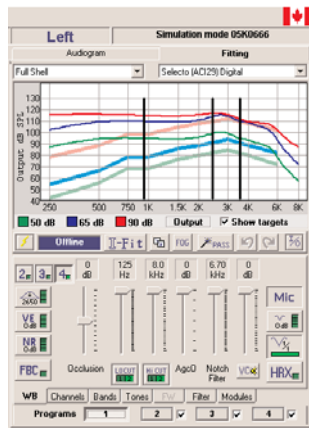
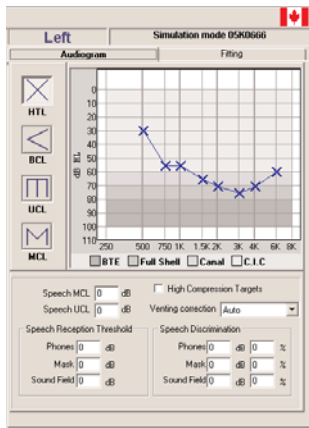


COMPRESSION FEATURES

Selecto has four compression modes.

- 1-The two floating points mode is where the gain and threshold parameters are adjustable for soft and loud sounds (Glo, TKlo, Gup, TKup).
- 2-The fixed Tklo (soft sound threshold) mode is set where the Tklo remains at 50dB, which allows to maintain a low compression ratio and a more precise adjustment for loud sounds.
- 3- The fixed Tkup (loud sound threshold) mode is where the Tkup remains at 104dB, which allows to maintain a low compression ratio and a more precise adjustment for the soft sounds.
- 4- The fixed dynamic range mode assures a 40dB dynamic between Tklo and the Tkup which in turn allows the patient to maintain a constant compression range.

AUDIOFIT FITTING TABS



Hear the difference!

Selecto (ACI29) Digital 05L0666 | Modèle et numéro de série de l'appareil (détectés automatiquement).

"Connected" establishes the link with the hearing aid.
 "Disconnected" disables communication and saves the hearing aid setting.

I-Fit Adjust automatically all parameters according to the targets.

Allows copying adjustments from one program to another or an hearing aid to the other side.

FOG Adjust parameters to obtain maximum power from the hearing aid.

'PASS' Wizard provide solutions and applies them for frequently encountered problems.

Undo the last adjustment.

Redo the last adjustment.

Display output curves and compression ratio.

Glo Adjust soft sounds gain.

Gup Adjust loud sounds gain.

TKlo Adjust compression threshold for soft sounds.

TKup Adjust compression threshold for loud sounds.

Time constants Access to time constants adjustment (Channel tab).

Channels The channel tab give access to all the compression settings.

Channel 1 | Channel 2 | Channel 3 | Channel 4
 Allows to select and adjust parameters for each channel. (minimum 2 channels)

Soften peak according to the hearing aid style.

Occlusion Allows to adjust the low frequencies in order to eliminate the occlusion effect.

LOCUT Low cut filter. Allows to choose first or second order filter for more precise fitting.

HiCUT high cut filter. Allows to choose first or second order filter for more precise fitting.

Agc Output compression limiting circuit.

2 | **3** | **4** Allows to choose the number of channel available

Allows to set the width of the notch filter.

Allows to set the gain of the notch filter.

HRX Enable or disable the HRX to limit input distortion for loud sounds.

Mic | **M+** | **TC** | **FW** Program mode.

Bands Access to bands adjustment.

Tones Allows to choose the signal amplitude and frequency of the low battery and program change indicator.

VC Activate volume control in the software.

VC Disable the hearing aid volume control.

WB Allows to adjust all the parameters that perform changes in the entire frequency response curve.

ADJUSTMENTS AVAILABLE WITH OPTIONAL MODULES

FW Access to FrontWave™ directivity.

Canal 1 | Canal 2 | Canal 3 | Canal 4
 Added channels with channel module activated.

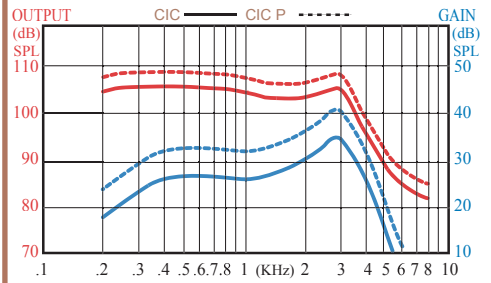
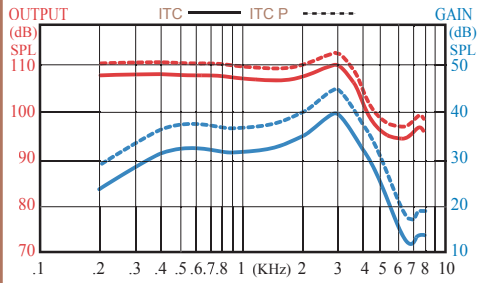
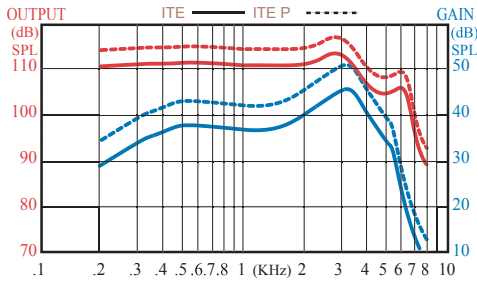
FBC Enable or disable the automatic feedback canceler,

Filtre Allows to build your own parametric filter.

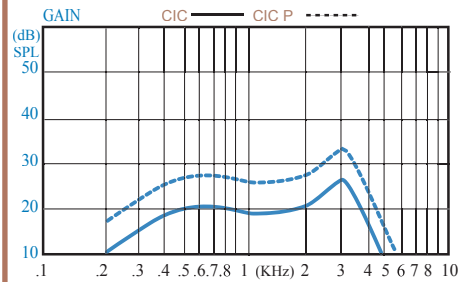
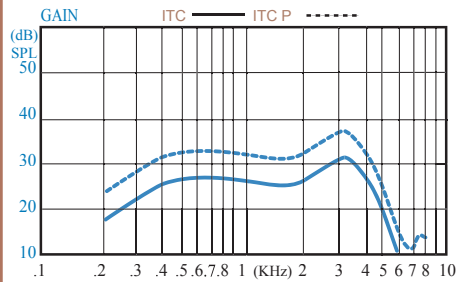
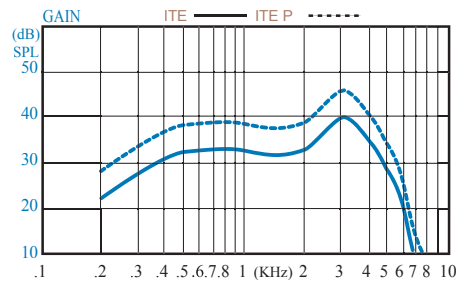
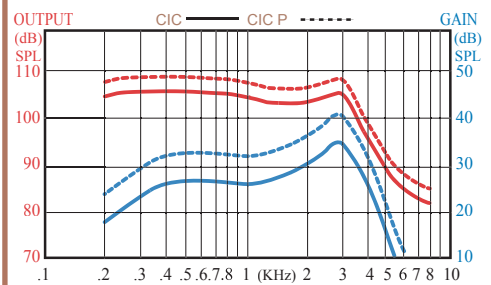
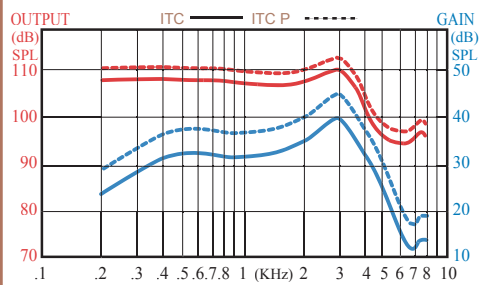
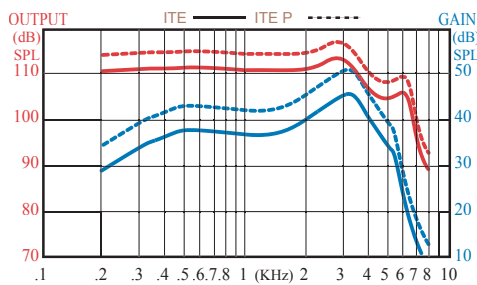
Programs **1** | **2** | **3** | **4** |
 Allows to choose different programs. Checked programs are accessible by the patient. Unchecked ones are disabled.

NR
 Desactivate or select the noise reduction level.

ANSI S3.22 1987 DATA



CEI 118-7 1994 DATA



Note: Every hearing aid is built according to the patient audiogram. The given data in this document represent maximal characteristics. They can vary according to the particularities of the order and the shape of the shell. They are also subject to changes without notice.

250, King E. Sherbrooke (Qc) Canada J1G 1A9

Tel.: 1 (800) 567-2711 / (819) 569-9986

Fax: (819) 823-6696

<http://www.audiocontrole.com>



Hear the difference!